

Instructions for assembling WLAN antennas HSA58 with the holder DAM

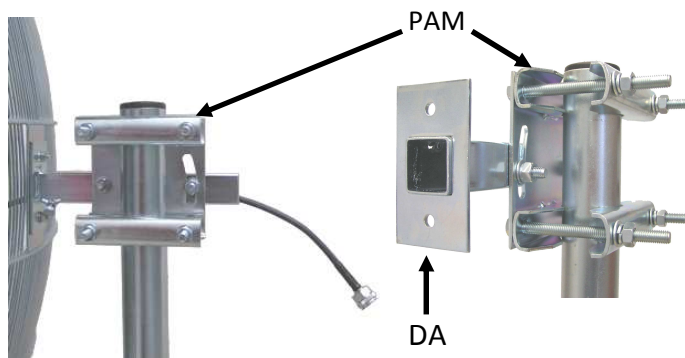


Fig.1 Holder DAM (DA+PAM=DAM)

If you want to connect the radiator of antenna with the cable RF400, H1000, etc., at first insert the cable to DA, then fasten DA to PAM. If you use the cable RG58, RG59, etc., or another with the termination SMArp, you could insert the cable after assemble DAM.

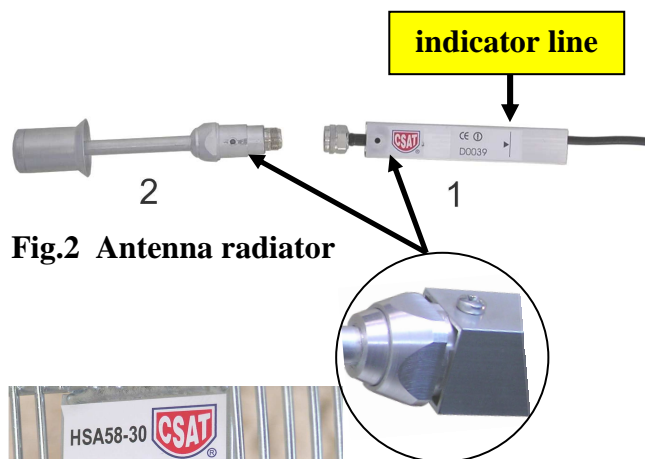


Fig.2 Antenna radiator

Put the cable through the holder of the radiator(1) and fasten it to the radiator(2), which termination is connector N female. Fix the position of the radiator in the holder with the detent screw M4x80.

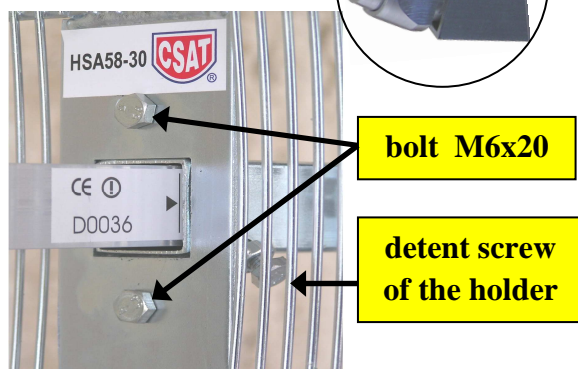


Fig.3 Correct position of the radiator

Fasten the holder DAM to the reflector of antenna with the bolts M6x20 (2 pcs). Insert the radiator to the holder DAM so that the indicator line on the label is exactly on the edge of the holder. Fix it with the detent screw of the holder DA.



For the vertical polarization the detent screw on the radiator must direct up or down. The ribs must be in the vertical position.

For the horizontal polarization rotate the WLAN antenna 90 degrees.

detent screw of the radiator

Fig.4 Complete WLAN antenna for the vertical polarization