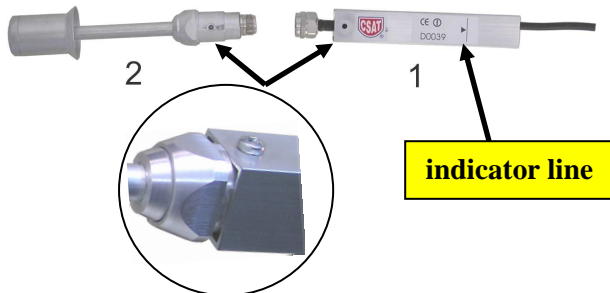
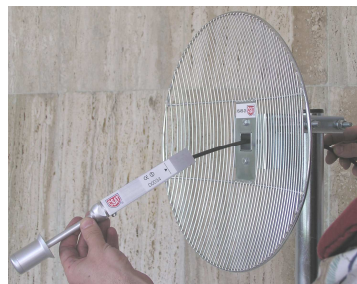
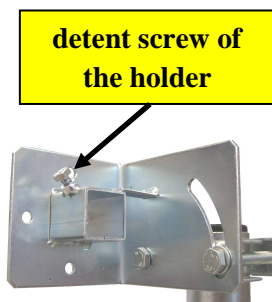


Instructions for assembling WLAN antennas HSA58 with the holder DAL



Put the cable through the holder of the radiator(1) and fasten it to the radiator(2), which termination is connector N female, with the detend screw M4x80.

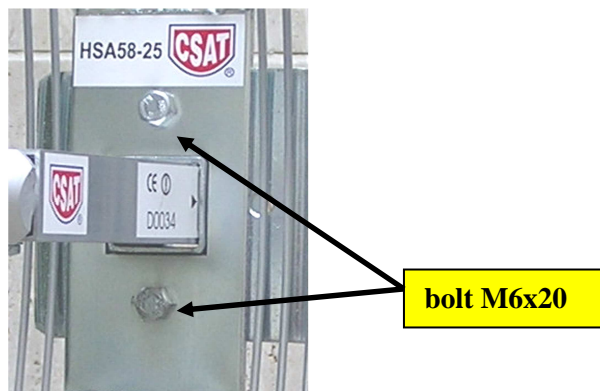
Fig.1 Antenna radiator HSA58



Fasten the holder DAL to the reflector of antenna with the bolts M6x20 (2 pcs). Insert the radiator to the holder DAL according to the fig. 3.

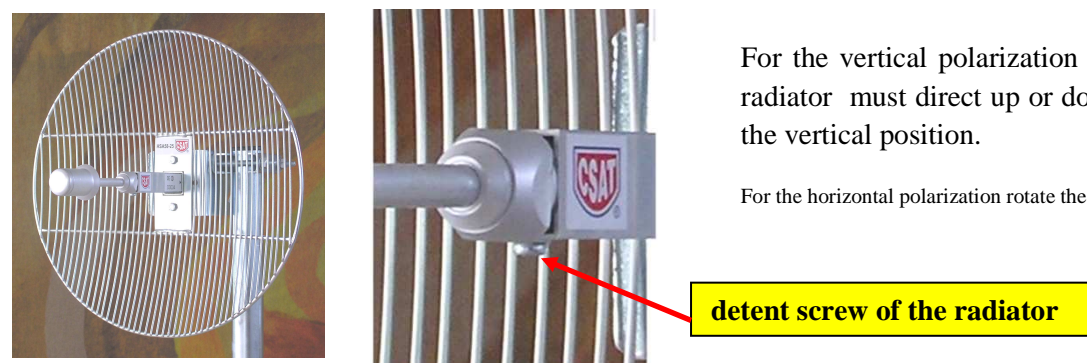
Fig.2 Holder DAL

Fig.3 The radiator is inserted to DAL



Insert the radiator to the holder DAL so that the indicator line on the label is exactly on the edge of the holder.

Fig.4 Correct position of the radiator



For the vertical polarization the detent screw on the radiator must direct up or down. The ribs must be in the vertical position.

For the horizontal polarization rotate the WLAN antenna 90 degrees.

Fig.5 Complete WLAN antenna for the vertical polarization